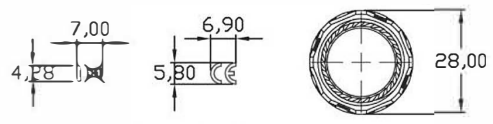


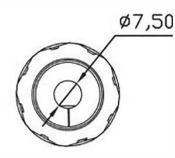
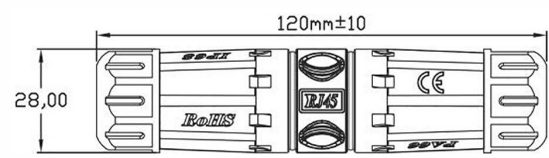
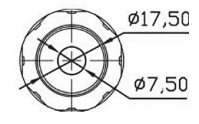
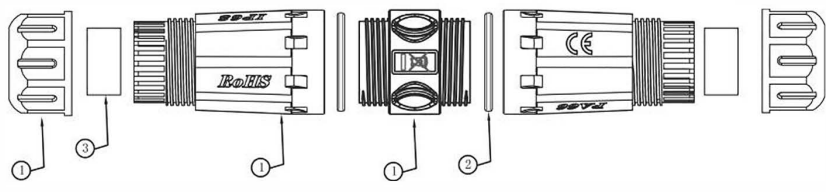


| | |
|--------------|--------|
| CUSTOMER NO: | REMARK |
| | |

IP68



M23 Thread



| | | | |
|---|-------------------------------|--|----------------------------------|
| A | FIEST EDITION | ping | 11/01/19 |
| REV. | ECR | TITLE | C.N. DATE |
| UNLESS OTHERWISE SPECIFIC: DIMENSIONS ARE IN MILLIMETERS ANGULAR TOLERANCE: ±1.0° | | QuickTrex® Premium Outdoor Harsh Environment Waterproof IP68 Rated In-Line Protective Connector / Coupling Cover Shell - Compatible w/ 4.5 - 7.5 mm Cable OD | |
| DIMENSIONS | | TOLERANCE | |
| 0.00 TO 30.00mm | | ±0.10mm | |
| 30.01 TO 80.00mm | | ±0.13mm | |
| 80.01 TO 150.00mm | | ±0.15mm | |
| 150.01mm | | ±0.20mm | |
| MATERIAL | P/NQT-OHE-IP68-INL-PCCCS-4575 | | |
| FINISH | FINISH | SCALE | SHEET 1/1 UNIT CM SIZE A4 REV. A |

| | | | | |
|-----|----------------|--------------------------------------|-----|------|
| ③ | YLJL-PVC80B-02 | | 2 | g |
| ③ | FS-GJQ-04 | O-type silicone ring22*17*2.5 orange | 2 | pcs |
| ① | YLJL-NL-01 | NYLON PA66 | 2 | g |
| NO. | MATERIAL P/N | DESCRIPTION | QTY | Unit |